



# Gentle<sup>Pro</sup>

## Radial Shockwave Therapy

with mechanical Shockwaves to significantly increase perfusion and stimulate the formation of new vascular structures at the same time.

Shockwaves, which are in principle compression waves, that work on the tissue are widely used procedure for the treatment of orthopaedic indications up to towards aesthetic treatments. Originally indicated for the non-invasive disintegration of kidney stones, Shockwave Therapy has since also been used successfully in orthopaedics. Its efficacy has been described and confirmed in numerous international studies and reports.

### Objectives:

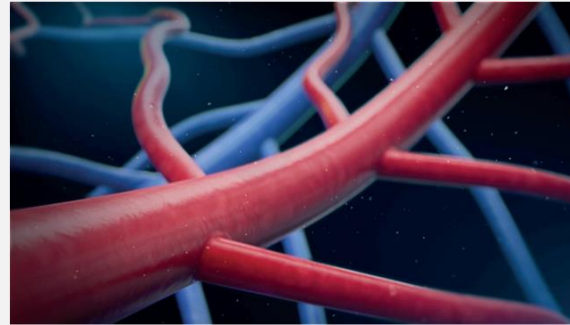
By applying radial Shockwaves to uninjured skin, pain and conditions with the musculoskeletal system, the skin and muscles can be treated.

Furthermore, references for successful treatments for erectile dysfunction and Pyrene's Disease can be found in literature.

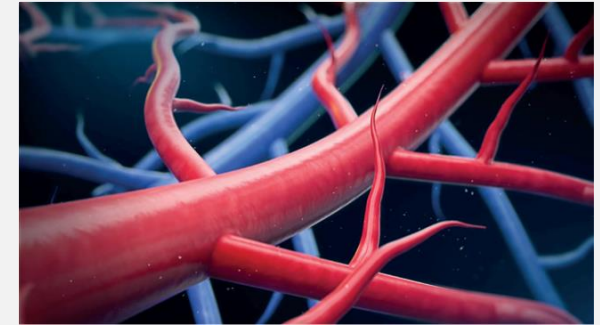


performance enhancement  
feel the difference





Before treatment



After treatment

### Treatment is not recommended with:

Vascular disorders in or in the vicinity of the application area  
Open wounds in or in the vicinity of the application area  
Local infections in the application area  
Applications in the field of malignant/benign tumours  
Application directly on cartilage surfaces or in the area of the small facet joints of the spine  
Application directly over implanted electronic devices, e.g. pacemaker or pain pump  
In the area where mechanical energy in the form of vibration results in the damage of the tissue e.g. in case of metal supply  
After fracture in case of torn muscle fibres or muscle tears  
In case of blood-clotting disorders or treatments that result in a change in blood coagulation  
During pregnancy  
In diseases resulting in a disturbance of the vasomotor system in the treatment area  
Above air-filled rooms, e.g. treatment of the thoracic spine  
Generalized pain syndrome, e.g. fibromyalgia  
In children, especially in the area of the epiphyses plate  
On the head

### Effects and reaction

- Longer erection
- Improved penile stiffness
- Promotes the development of new blood vessels (neoangiogenesis)
- Improved perfusion of the penis
- Mechanical pulses on the penis
- No need for PDE-5 inhibitors
- Stimulation of the corpus cavernosum of the penis

### Rapid results

In general, 5 to 8 treatments are needed to ensure a successful application. A positive change and a longer or stronger erection is often reported after just the first application. Shockwave treatment for erectile dysfunction is successful as a stand-alone application and can also be used in combination with other forms of treatment. Shockwave treatment can therefore be successfully combined with PRP applications, vacuum pumps or also PDE-5 inhibitors (vasodilators), among others. The application is also virtually painless and has no known adverse effects.

**Zimmer**  
AestheticDivision

**Gentle<sup>Pro</sup>**



## *Simple treatment*

The GentlePro shockwave system is equipped with an innovative water-cooled shockwave generator which operates pleasantly quiet and ensures durability. The new ergonomic handpiece with a “shock absorber” offers the user the highest level of safety and maximum comfort and thus facilitates work. Thanks to the 15 mm applicator head, the energy from the radial shockwave can be introduced in a targeted manner into the desired area and ensures a highly successful application from the outset. The large 12” display with ultramodern touch screen technology allows the pre-set programs to be found quickly and easily and special patient- or application-specific programs to be saved. Other parameters which are important for a successful application, such as frequency, energy, and the number of pulses to be emitted, can be easily changed with just a few “clicks”.

